

VELOCICALC® ROTATING VANE ANEMOMETER MODEL 5725



The VelociCalc® 5725 is a high performance, yet simple to use, rotating vane anemometer. High accuracy and reliability make the VelociCalc 5725 the professional's ideal tool for measuring unevenly distributed or fluctuating flows through heating and cooling coils, grilles, and filters.

It accurately measures air velocity and temperature, calculates flow rate, performs averaging, and can determine minimum and maximum readings. Using sweep mode, you can quickly provide one averaged reading of velocity or volume over a large measurement area. The large vane head automatically averages and dampens velocity and volume readings. The VelociCalc 5725 includes variable time constant, sampling and statistics functions and data logging capability.

Applications

- + Heating and cooling coil analysis
- + Grille measurements
- + Face velocity measurements
 - Filters
 - Kitchen exhausts

Features and Benefits

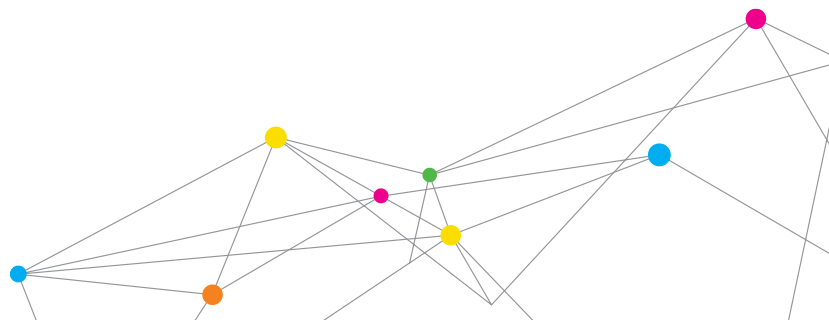
- + Reversible 4 in. (100 mm) head to read supply and exhaust flows
- + Calculates volumetric flow rate when user inputs duct shape and size, or area
- + Sampling function records multiple point measurements
- + Automatic averaging of air velocity
- + Simultaneously displays velocity and temperature
- + Sweep mode for one overall measurement
- + Optional 36 in. telescopic probe available
- + Compatible with optional Aircone flow hoods

Data Logging Features

- + Logs 12,700+ samples with a time and date stamp
- + Recall, review, store data
- + LogDat2™ downloading software included



UNDERSTANDING, ACCELERATED



SPECIFICATIONS

VELOCICALC® ROTATING VANE ANEMOMETER MODEL 5725

Velocity

Range 50 to 6,000 ft/min (0.25 to 30 m/s)
Accuracy ±1.0% of reading ±4 ft/min (±0.02 m/s)

Duct Size

Range 0 to 500 ft² (0 to 46.45 m²)

Volumetric Flow Rate

Range Actual range is a function of velocity and duct area

Temperature

Range 40 to 113°F (5 to 45°C)
Accuracy ±2.0°F (±1.0°C)
Resolution 0.1°F (0.1°C)

Instrument Temperature Range

Operating (Electronics) 40 to 113°F (5 to 45°C)
Storage -4 to 140°F (-20 to 60°C)

Data Storage Capabilities

Range 12,700+ samples and 100 test IDs

Logging Interval

1 second to 1 hour

Time Constant

User selectable

External Meter Dimensions (H x W x D)

3.3 in. x 7.0 in. x 1.8 in. (8.4 cm x 17.8 cm x 4.4 cm)

Meter Weight with Batteries

0.6 lbs (0.27 kg)

Power Requirements

Four AA-size batteries or optional AC adapter

Aircone Flow Hoods

Aircone Flow Hoods are a fast and accurate method of maximizing the usefulness of your

4 in. (100-mm) rotating vane anemometers. For a modest investment, you can enhance the capability of your rotating vane, turning it into an air volume flow balancing tool.



Features and Benefits

- + Rectangular and circular cones available
- + Measures volumetric flow at grilles, diffusers, and linears
- + Reads air volume quickly and accurately
- + Excellent choice for small grilles

TSI Aircone Flow Kit (p/n 801749) includes one each:

Rectangular	11.2 in. x 9.2 in. (285 mm x 235 mm)
Round	7.1 in. (180 mm) diameter
Range	0 to 210ft ³ /min (0 to 100 l/s, 0 to 360 m ³ /h)

Accessories

801748	Telescopic articulated extension 1.3 to 3.6 ft (0.4 to 1.1 m)
--------	--

Specifications are subject to change without notice.

TSI, the TSI logo and VelociCalc are registered trademarks, and LogDat2 is a trademark of TSI Incorporated.



UNDERSTANDING, ACCELERATED

TSI Incorporated - Visit our website www.tsi.com for more information.

USA	Tel: +1 800 874 2811	India	Tel: +91 80 67877200
UK	Tel: +44 149 4 459200	China	Tel: +86 10 8219 7688
France	Tel: +33 4 91 11 87 64	Singapore	Tel: +65 6595 6388
Germany	Tel: +49 241 523030		